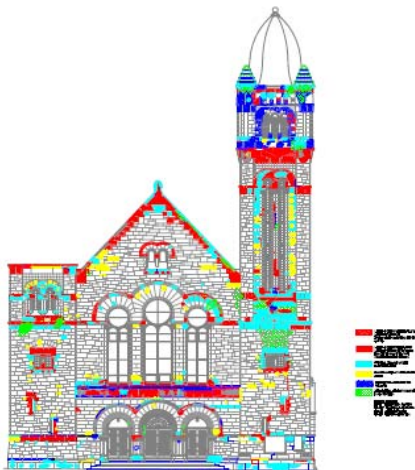
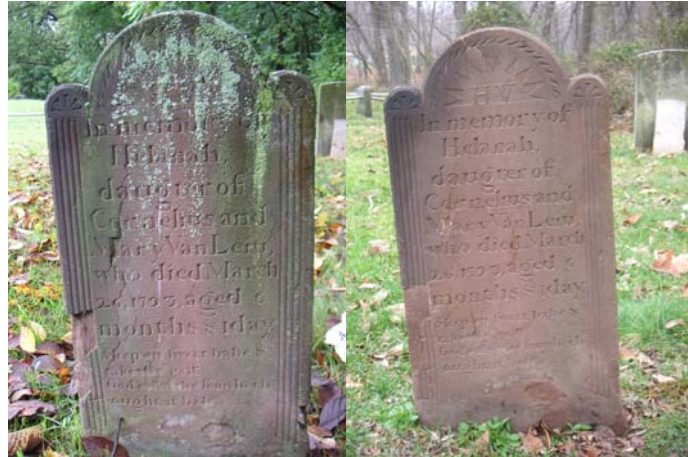


CONSERVATION EXPERIENCE

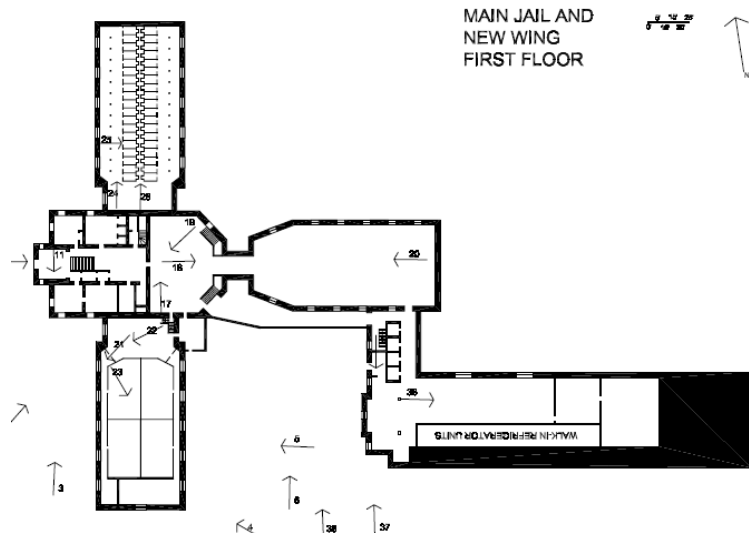
Elm Ridge Cemetery Conservation, North Brunswick, Middlesex County, New Jersey. A conditions assessment was undertaken in 2005, which recommended a phased conservation approach for the Elm Ridge Cemetery. The overall goal of the conservation treatment was to slow/halt the active deterioration mechanisms, and to repair past damage. Conservation work was completed in 2006 with additional work planned. The work entailed resetting of bases and grave markers, repair of breaks, grout delaminations, patching of joints and removal of biological growth.



West Park Presbyterian Church, New York, New York. A conditions assessment and treatment recommendations were completed for the rehabilitation of West Park Presbyterian Church. The church, located at the northeast corner of Amsterdam Avenue and 86th Street in Manhattan, is a Richardsonian Romanesque brownstone building that dates to the late nineteenth century.

Indian Run Farm, Ashbridge Barn, West Whiteland Township, Chester County, Pennsylvania. A preservation plan and treatment recommendations were completed for the Ashbridge Barn, which is situated on Indian Run Farm. The project included a construction monitoring phase, mock-up review, materials recommendations, and consultation with the architect to design appropriate specifications for adaptive reuse of the barn.





Essex County Jail Annex, North Caldwell, Essex County, New Jersey. This mitigation project required the completion of sketch plans and “HABS-like” medium format photography for a late nineteenth-/early twentieth-century jail complex. The plans with photograph angles were generated in AutoCAD.

Barrier Forts Monument, Brooklyn Navy Yard, Brooklyn, New York. This project was undertaken to conserve a marble monument. Treatments included: cleaning the monument with an architectural anti-microbial, removal of inappropriate pointing and patching material, structurally reattaching the broken wing, rebuilding the missing wing elements, repointing the monument with a lime-based mortar, and consolidating the disaggregating marble inscriptions.

