

HISTORIC PRESERVATION PROJECTS



Pennsylvania Schools Historic Resource State-Wide Survey. This project was conducted for Preservation Pennsylvania and the Pennsylvania Historical and Museum Commission (PHMC) as part of the PHMC's historic school buildings initiative. Schools were selected from across the state in order to provide an overview of styles, construction materials and layouts from a regional and state perspective. A survey of 50 historic schools dating from the mid-nineteenth through the mid-twentieth century were surveyed as part of this project. Details of the survey can be found on the PHMC's website.

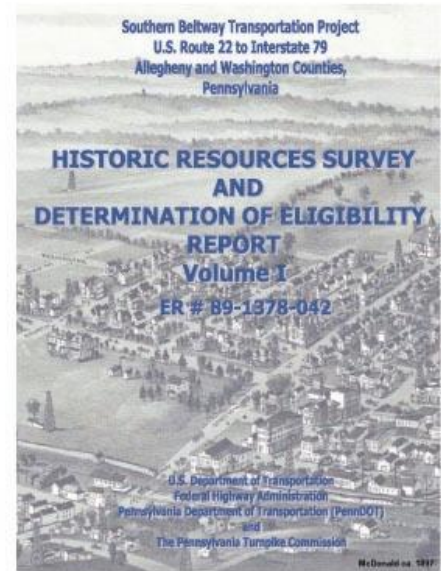
Cheltenham Township Historic Resources Survey, Montgomery County, Pennsylvania. Funded by a grant from the Pennsylvania Historical and Museum Commission, this survey documented 100 resources within the township. Resource types included residential estates, dwellings, religious buildings, commercial structures and educational facilities. The survey is part of Cheltenham's Township Preservation Plan.



State-Wide Open-End Contract for the Pennsylvania Bureau of Abandoned Mine Reclamation. CHRS conducted numerous projects in southwestern and central Pennsylvania as part of a contract with the Pennsylvania Bureau of Abandoned Mine Reclamation. Projects included survey and recordation of both anthracite and bituminous coal-related resources. One of the largest recordation projects involved the Locust Summit Central Breaker, which was determined eligible for listing in the National Register of Historic Places. To mitigate the adverse effect, a HAER documentation was completed of the breaker within its setting.



Southern Beltway Transportation Project, U.S. Route 22 to Interstate 79, Allegheny and Washington Counties, Pennsylvania. Over 120 historic structures were surveyed, documented and evaluated. Resource types encountered included residential, agricultural, religious, commercial and industrial. The results of the survey were incorporated into the project's Geographic Information System (GIS). The GIS allowed for the project team members to work together to identify alternatives and potential alignments that minimized environmental and cultural resource impacts. Close coordination between the engineers, the cultural resource consultants, and the agencies resulted in the project having of *No Adverse Effect* to historic resources.



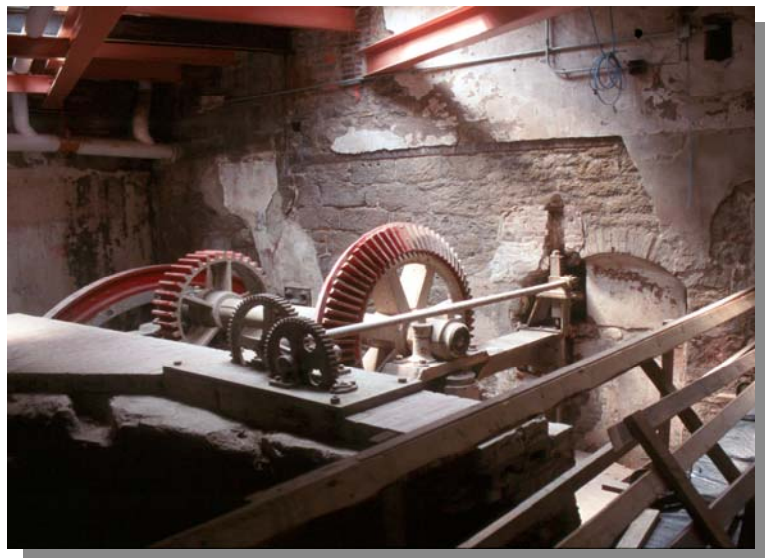
Shellpot Bridge No. 1 Rehabilitation Project, City of Wilmington, New Castle County, Delaware. CHRS conducted a survey of the Shellpot Cut-off of the Philadelphia, Wilmington



& Baltimore Railroad and the associated Shellpot Bridge No. 1 over the Christiana River in association with the rehabilitation of the bridge by Norfolk Southern Corporation. A National Register nomination form was prepared for the National Register-eligible metal truss swing bridge. The bridge and approachways were also fully documented in a State-level recordation that evaluated the physical evolution of the structure's engineering features.

Fairmount Waterworks, City of Philadelphia, Pennsylvania.

Work was conducted as part of the renovation of this historic urban resource. The Waterworks is associated with an early endeavor to furnish Philadelphia with a commercial water supply. Archaeological work provided information on the design of the wheel pit and forebay of Wheel 1. HAER-Level photography was conducted in order to document archaeological and above-ground elements of the property.





Salem County Historic Resources Survey, Salem County, New Jersey. Conducted as a pilot program for the New Jersey Department of Transportation and the New Jersey Historic Preservation Office (NJHPO), this survey of over 10,000 properties incorporated field work with an Access Database and accompanying GIS. Over 1,500 of the original properties surveyed were re-evaluated at the Intensive Level in order to ascertain which properties were eligible for the State and National Registers. In addition to the individual properties, over 15 historic districts were identified and surveyed. The GIS and Access Database serve as the basis for the NJHPO's newly revised survey guidelines.

South Street Bridge Replacement Project, Philadelphia, Pennsylvania. A HAER recordation was completed for the South Street Bridge. Constructed in four separate sections, the bridge was one of the only remaining bascule lift bridges in the City of Philadelphia. The HAER recordation included large-format photography and historic research. The project was conducted under Section 106 for the City of Philadelphia, the Pennsylvania Department of Transportation and the Federal Highway Administration.



Elkins Bypass Project, City of Elkins, Randolph County, West Virginia. This project was developed to alleviate traffic and safety concerns in and around Elkins, the commercial, medical, cultural and educational center of Randolph County and the surrounding area. CHRS surveyed a total of 162 resources. A Criteria of Effect Report evaluated the effect of the project, a proposed four-lane highway with associated roadway and railroad right-of-way improvements, on 16 National Register-eligible or listed properties identified in the Historic Resources Survey and Determination of Eligibility Report.